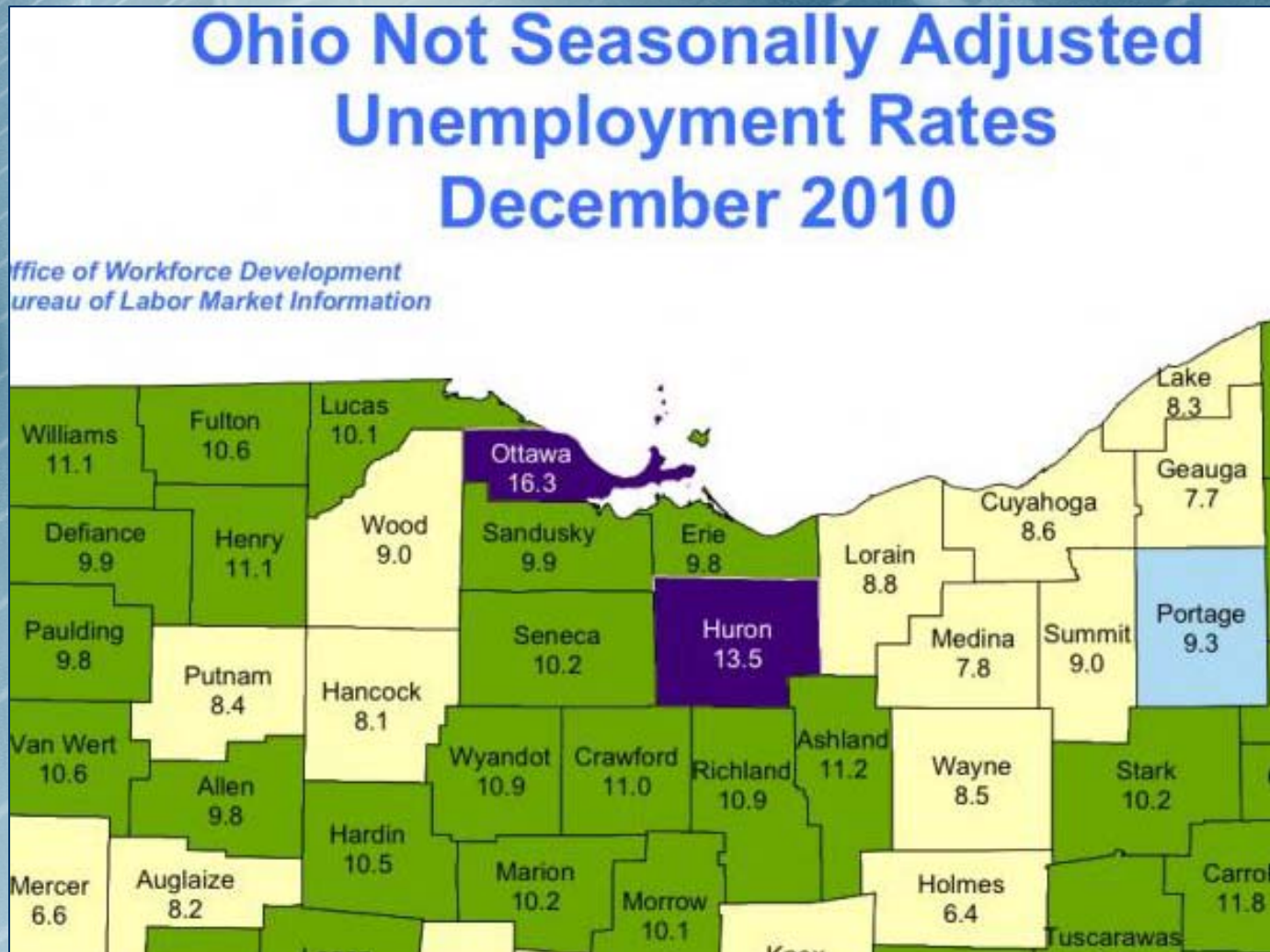




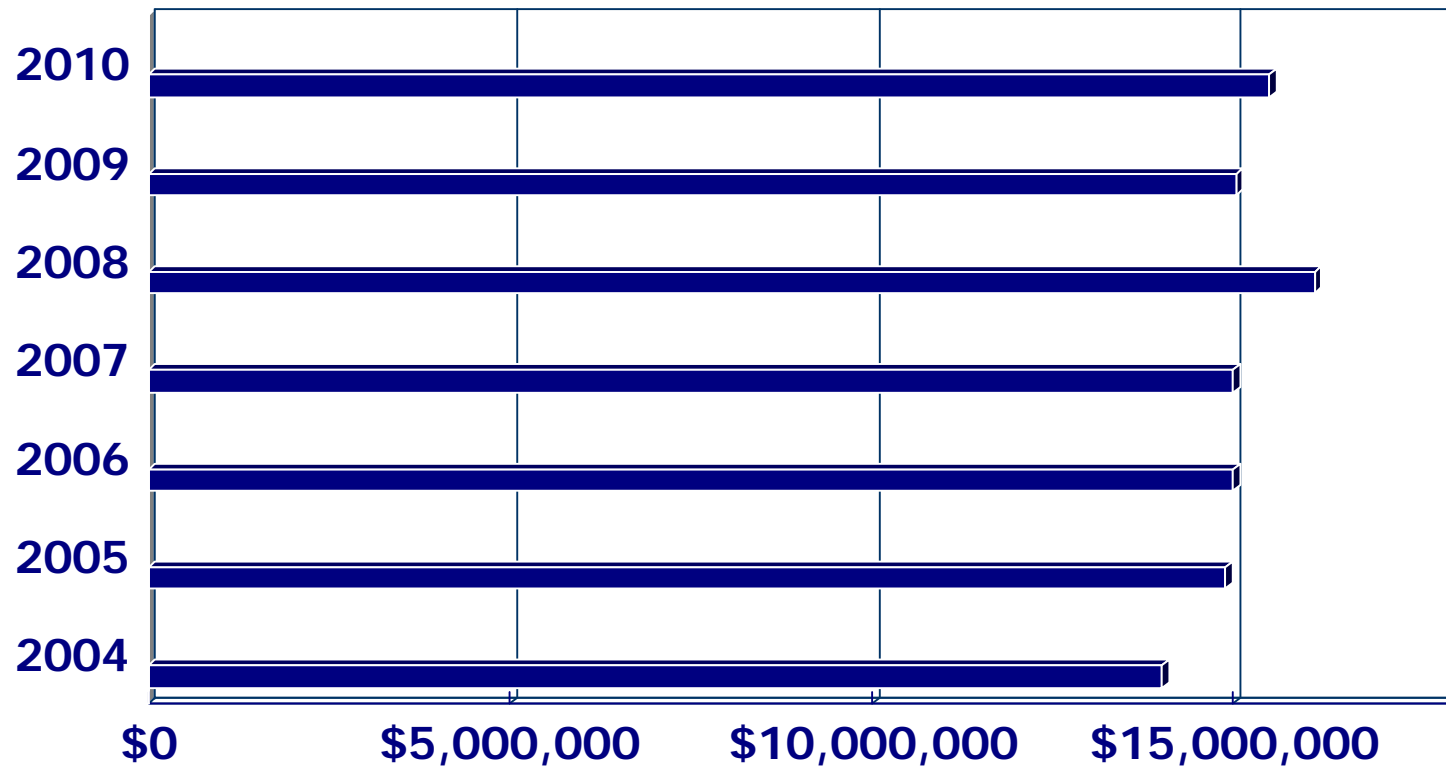
State of the County Address

Presented by James F. Carter, Tim W. Brown & Alvin L. Perkins
March 15, 2011

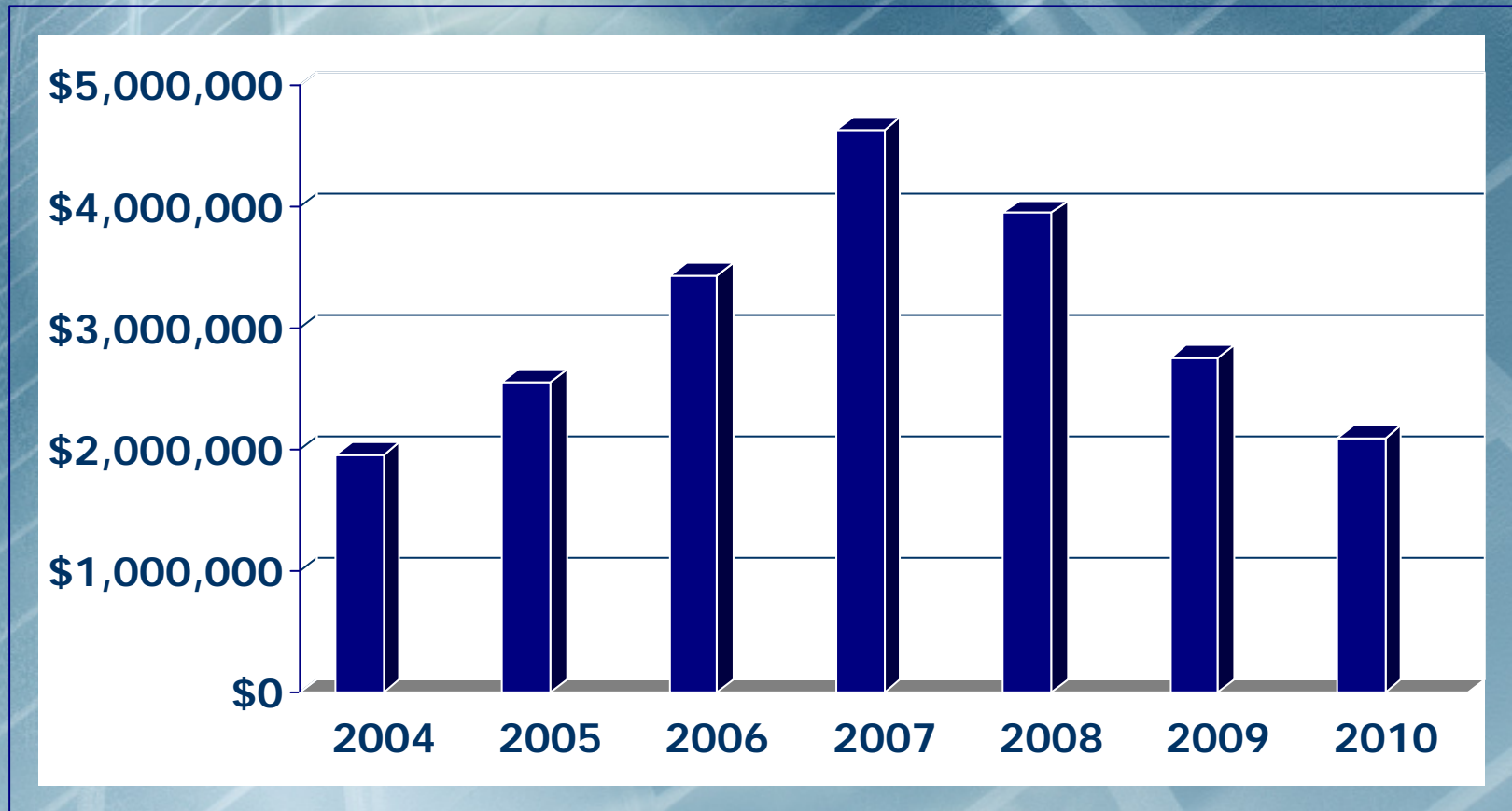
Unemployment Rates By County



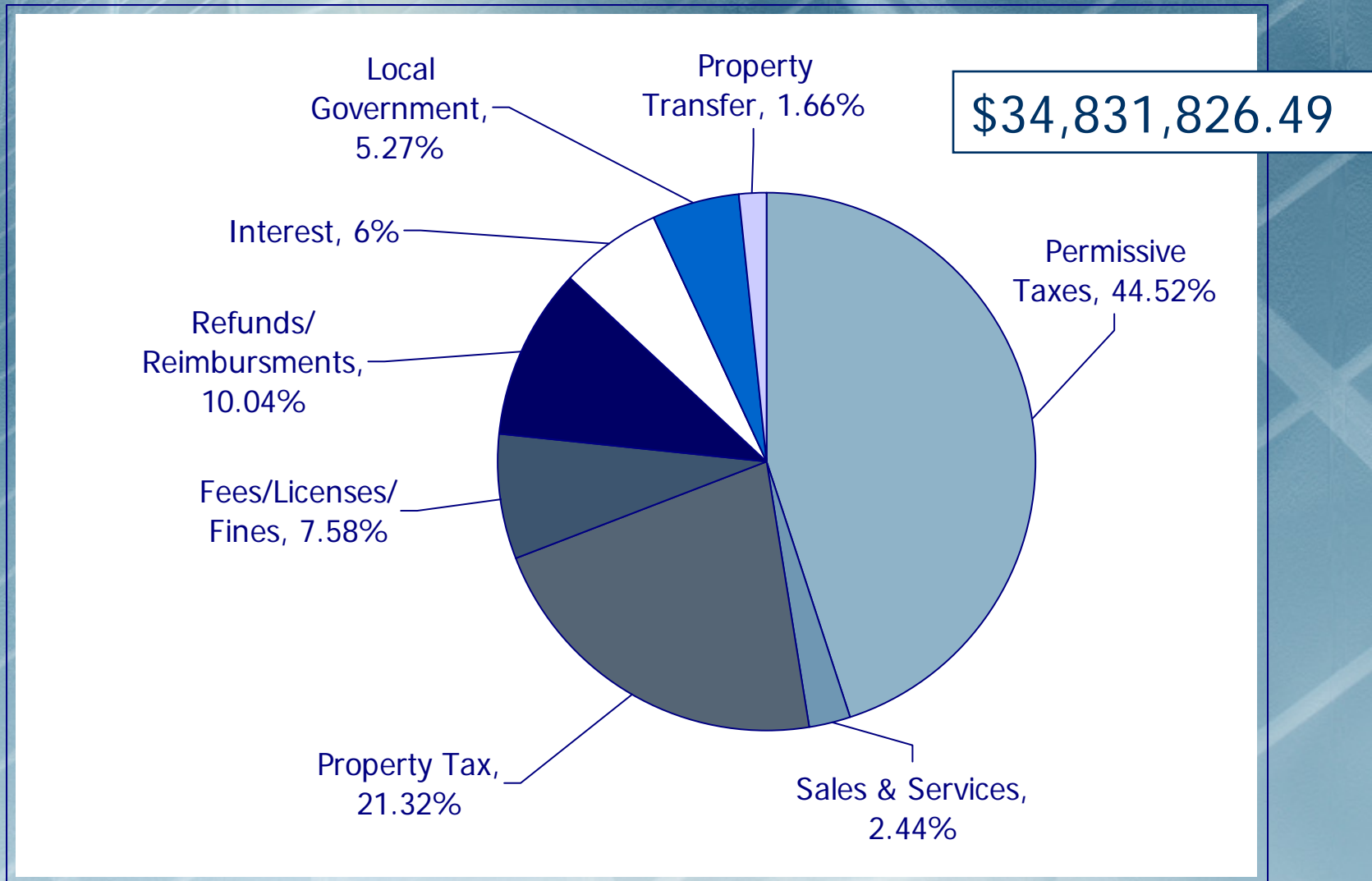
Sales Tax Income



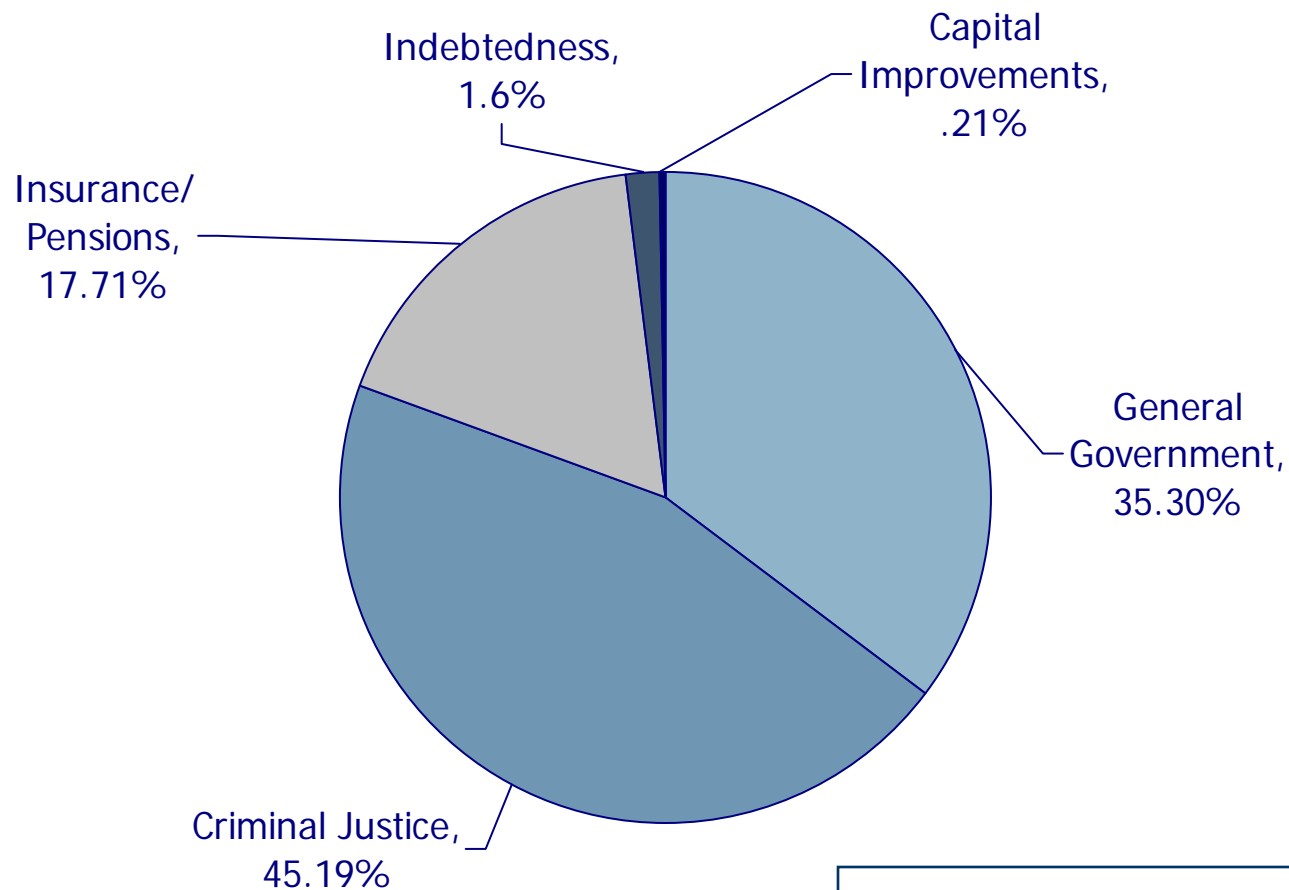
Investment Income



2010 General Fund Receipts

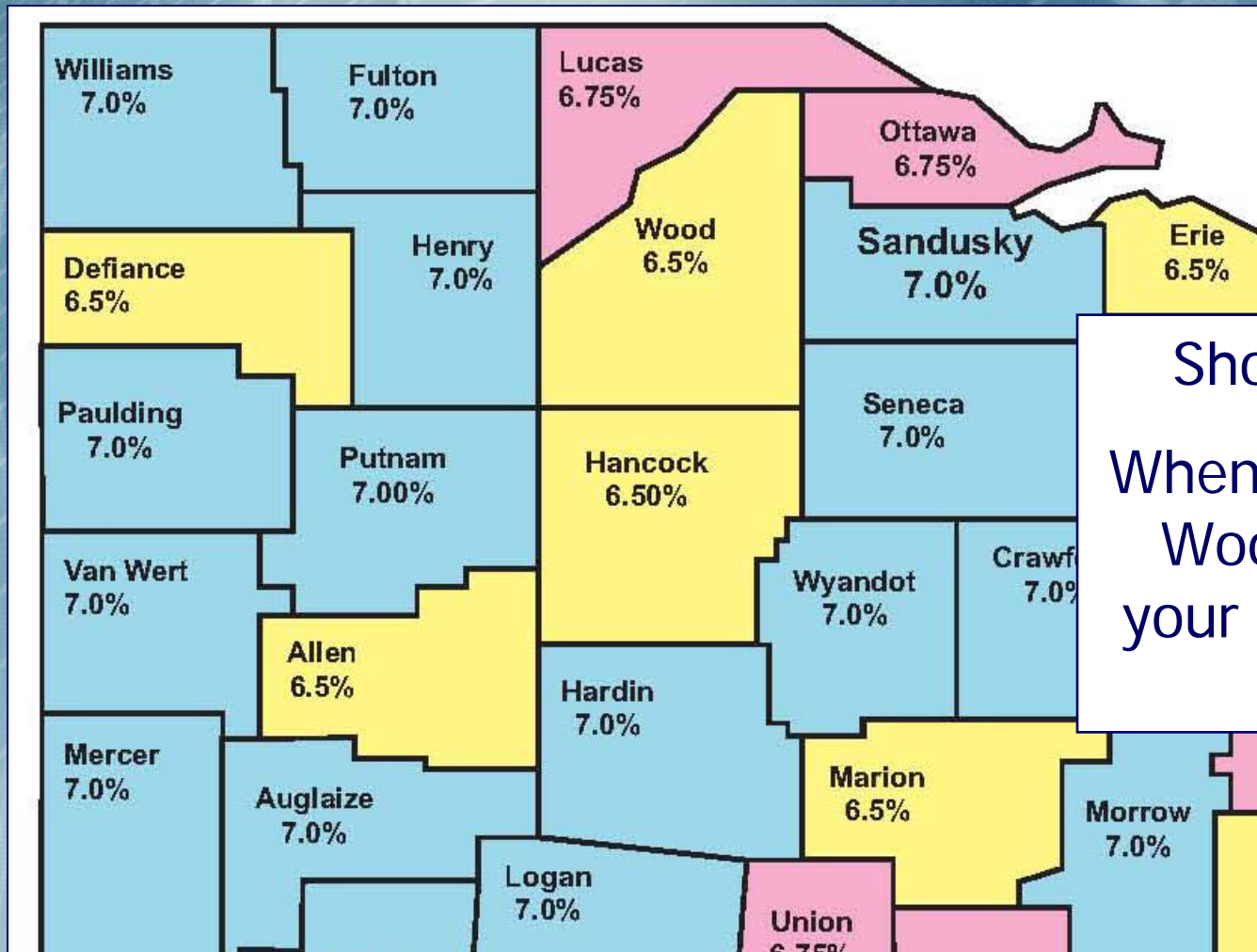


2010 General Fund Expenditures



\$33,551,284.64

Sales Tax Rates of Local Counties



Shop Locally!

When you shop in
Wood County,
your penny stays
here.

Rates Effective October 2010

JOB Solutions Recognized



Recipient of the Excellence in Strategic Workforce Planning by the Ohio Economic Development Association

JFS Director Recognized



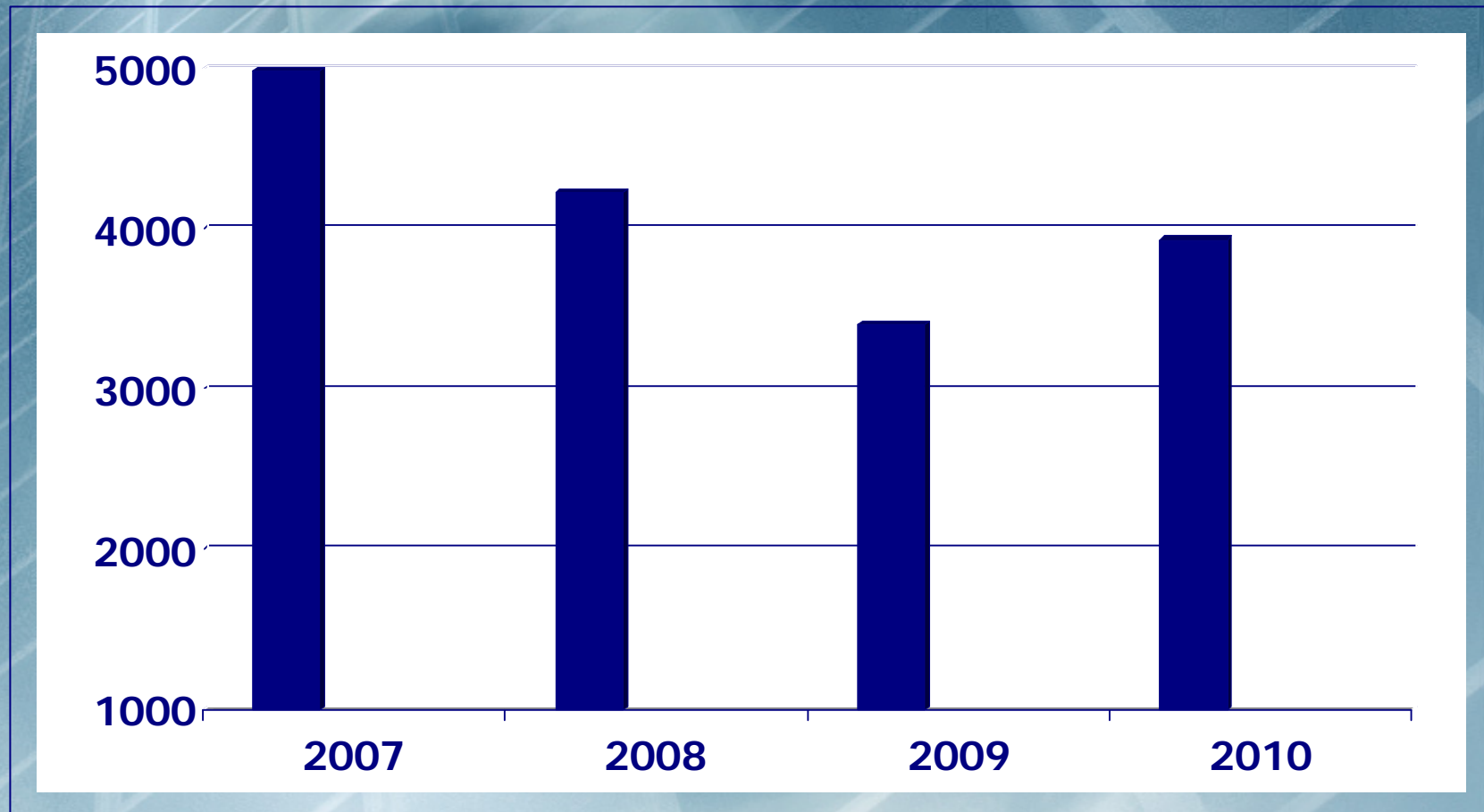
Paulette Stephens named JFS Director of the Year by the Ohio Job and Family Services Directors Association.

Children Services Worker Honored



Tonya Camden received the 2010 Mary Ellen Award at the Court Appointed Special Advocates (CASA) Celebrates Kids Conference.

Building Permits Issued

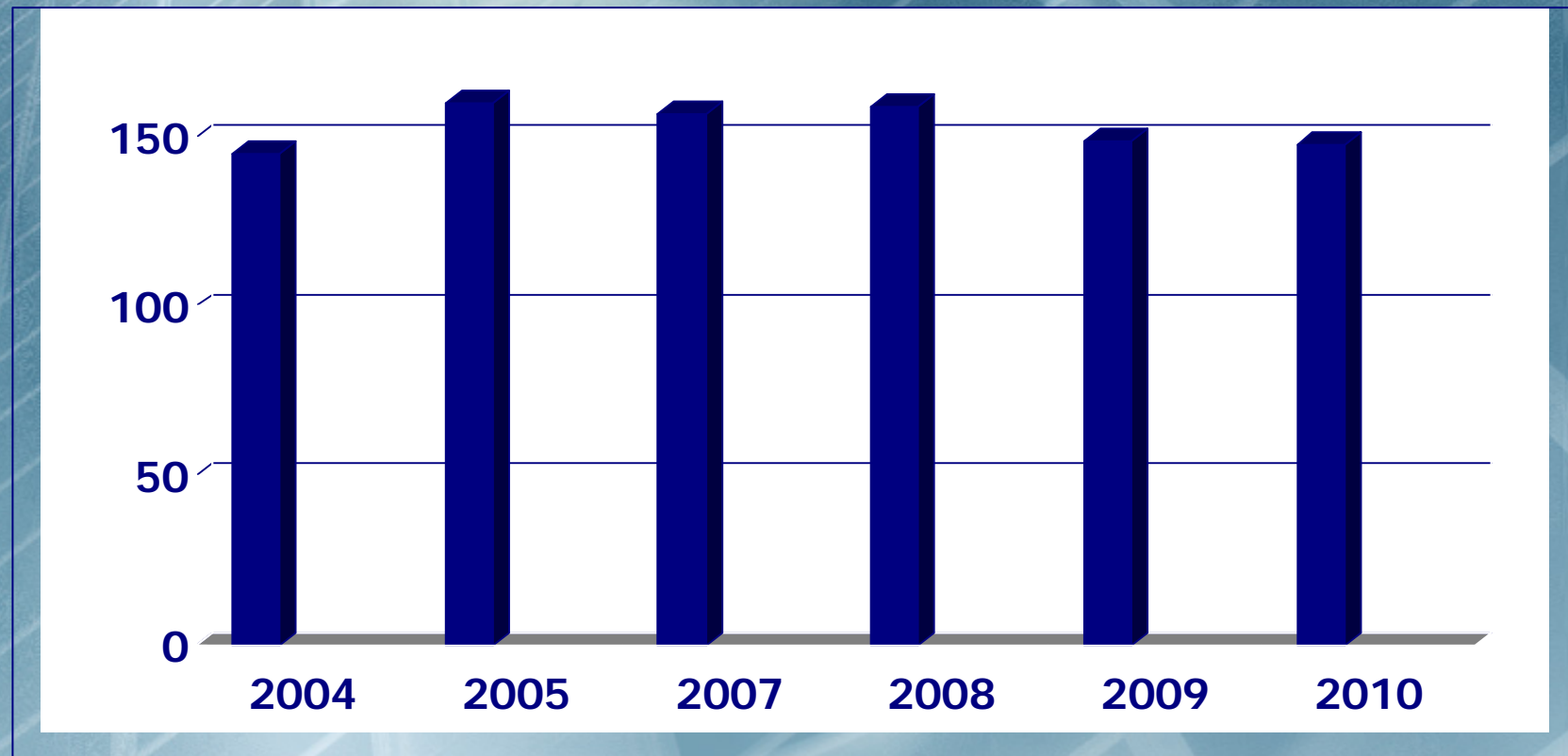


Building Inspection Expands Services



- The Wood County Building Inspection Department received certification to provide code enforcement for all manufactured homes in parks and on private property.

Average Daily Jail Population



Inmates
Booked

4,830

5,081

4,582

4,402

4,296

4,186

Emergency Operations Center Activated



The EMA/EOC assisted Lake Township officials on-site for two weeks following the EF-3 tornado and provided an additional four months of off-site assistance.

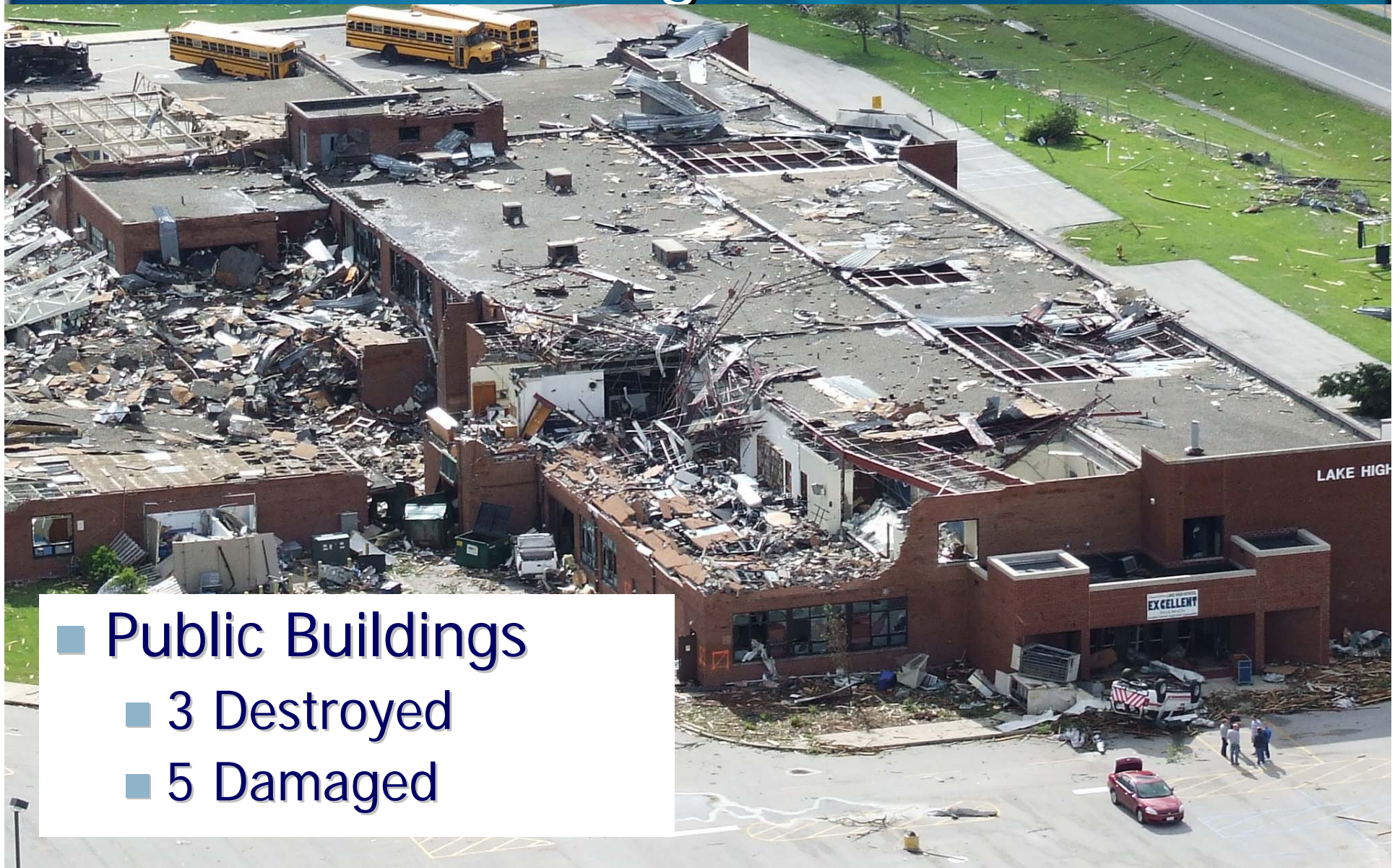
Damage Assessment from June 5 Tornado in Lake Township



■ Residential

- 12 Homes Destroyed
- 10 with Major Damage
- 50 with Minor Damage

Damage Assessment Lake High School



- Public Buildings
 - 3 Destroyed
 - 5 Damaged

Damage Assessment Lake Township Administration Building



Damage Assessment



- Businesses/Industry
 - 3 Major Damage
 - 5 Minor Damage

Damage Assessment

- 
- An aerial photograph of a vast agricultural field, likely a rice paddy, showing rows of green crops. There are some areas where the crops appear to be flattened or damaged, particularly in the lower right quadrant. A small white object, possibly a building or a vehicle, is visible in the lower left.
- Agricultural
 - 2 Destroyed
 - 1 Damaged



Remembering Lives Lost



Commissioners Join Wood County Port Authority



The Commissioners
appointed John
Cheney and Martha
Woelke to the Port
Authority Board.

Grant Funds Provided Assistance for Bridge Replacement Project



Huffman Road Bridge
Portage Township

Liberty Hi Grade Separation in Henry Township



Ditch Cleaning



CSX Prepares for Opening



First Solar Expanded Campus



Principle Business Enterprises Expansion Project



Wood County Hospital Expansion



Porches Reopen At Historical Center



Youth Olympics Promoting Competition without Conflict



Geographic Information System

Provides digital mapping information to residents, businesses and governmental entities.



In 2010, the Auditor's Office added new aerial images to the system.

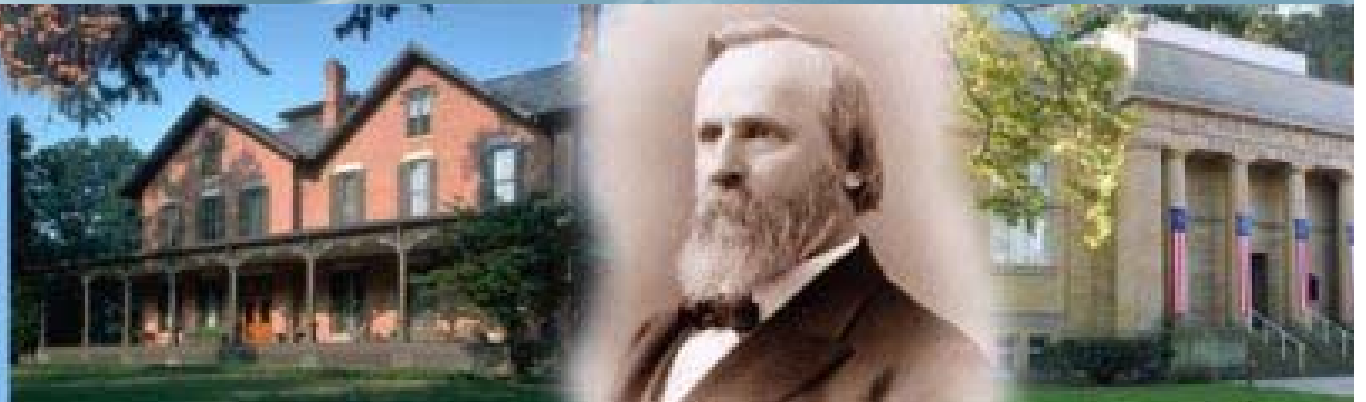
Accessibility of Probate Records Expands



Agreements with the Center for Archival Collections at BGSU and the Rutherford B. Hayes Presidential Center help preserve original paper records valued by many genealogists and historians.

Rutherford B. Hayes

*Presidential
Center*



Become a CASA/GAL Volunteer



Court Appointed Special Advocate/Guardian ad Litem volunteers gather information about the life, make recommendations and advocate for the best interest of the child, and monitor the situation until a safe, permanent home is made for the child.

Meeting with New Employees



Spirit of Wood County Awards



Nominate Someone You Know by April 29

Planning Begins for Civil War Sesquicentennial



Recognizing Employees for their Service to Wood County



Peregrine Falcons Spotted in Courthouse Clock Tower



Photo by Andrew Weber
Sentinel-Tribune

Two peregrine falcons were spotted roosting on the clock tower. The closest reported nests are in Toledo, Oregon and Lima.

Wood County Elected Officials



2011 Town Hall Meetings



- Tontogany
- Bradner
- Millbury
- Troy Township

www.co.wood.oh.us

■ Links to Elected Official and Departmental Websites

- Real Estate Information, Tax Payments, Index searches
- Voter Location Search
- Court Records Search
- Dog Adoptions/Dog License Purchase
- Marriage License and Probate Records
- Sheriff's Sales
- Sex Offender Database
- Interactive Maps
- Road Closings
- Building Permit Inquiry
- Bids/Requests for Proposals
- Internet Auction of Surplus Items

